

Calendar 2024



County of Lackawanna Transit System



Dear COLTS Colleagues, Friends, and Partners.

As we enter 2024, I want to thank you for your continued support of County of Lackawanna Transit Systems.

To our staff, who dedicate their lives to providing our community with safe, friendly, and reliable transportation, we are thankful and honored to work alongside you, as we aim endlessly to achieve our organization's goals.

To our Board of Directors, we could not achieve our mission without your ongoing support, time, dedication, and guidance.

To our passengers and their families, we thank you for your trust and confidence in our organization. We sincerely appreciate you and your support each year.

As we ring in the New Year, we look forward to another year of serving our community. We will continue our efforts in seeking new ways to improve our service, as we know we would not be successful without each of you. We are excited for all that 2024 brings, and we wish you all a safe, healthy, and happy New Year!

With warmest regards,

Timothy B. McGrath

Timothy B. McGrath, III
Executive Director, County of Lackawanna Transit Systems





County of Lackawanna Transit System (COLTS) was officially certified by the state as a municipal authority in November 1972. COLTS replaced the **Scranton Transit Company**, which provided electric trolley service and bus service for many years. The nation's first successful electric streetcar system began service in Scranton in November 1886. It was these electric trolleys that gave the city its nickname, "**The Electric City.**" Bus service completely replaced electric streetcars in December 1954. The original base fare to ride a COLTS bus was 35 cents.

The original five COLTS board members, appointed by Commissioners Charles Luger, Robert Pettinato, and Edward Zipay, were: Fred Tuckerman, Mrs. James Edmonson, Seymour Hollenberg, Carmine B. Tomaine, and Ernest J. Gazda Sr.

COLTS inherited the Shared Ride Program from Lackawanna County in January 2013. Our current Board of Directors are Larry Wynne, Michael Dougherty, Brian Doughton, Martha Dougher, and Gregg Nieto. The Shared Ride Department offers various programs, such as SEATS, PwD, and the Pennsylvania lottery fund, there are many ways to ride with COLTS.

Public transportation has a long history in Lackawanna County, and COLTS is proud to be your transit provider.

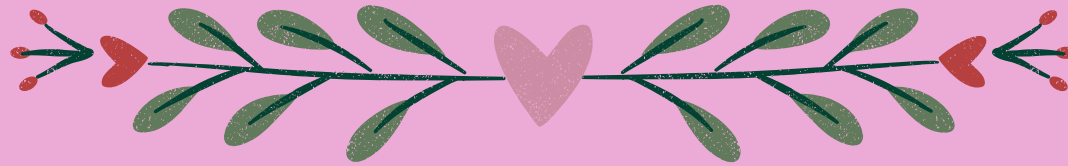
Call us today to schedule an appointment: 570-963-6795

January

**Indicates Fixed Route in Service

SUNDAY	MONDAY	TUESDAY	WEDNESDAY	THURSDAY	FRIDAY	SATURDAY
	1 NO SERVICE NEW YEAR'S DAY	2 <i>**Essential Trips Only</i>	3	4	5	6
7	8	9	10	11	12	13
14	15 ADMIN. OFFICE CLOSED MARTIN LUTHER KING, JR. DAY	16	17	18	19	20
21	22	23	24	25	26	27
28	29	30	31		DECEMBER 2023 S M T W T F S 1 2 3 4 5 6 7 8 9 10 11 12 13 14 15 16 17 18 19 20 21 22 23 24 25 26 27 28 29 30 31	FEBRUARY S M T W T F S 1 2 3 4 5 6 7 8 9 10 11 12 13 14 15 16 17 18 19 20 21 22 23 24 25 26 27 28 29

Special Efforts Accessibility Transportation System



COLTS provides ADA complementary paratransit service to qualifying individuals through a program called **Special Efforts Accessibility Transportation System, or SEATS.**

SEATS service hours and locations follow the COLTS' fixed route hours and locations of service:

5:30 a.m. to 12:55 a.m. Monday through Friday

(not all COLTS fixed routes operate during this time;

ADA service is provided for the fixed routes operating in that time) 7:45 a.m. to 12:55 a.m. on Saturdays

Trips may be requested up to 4 p.m. on the day prior to the requested trip. Trips may be requested up to 14 days prior to the requested trip time. Passengers can call between the hours of 8 a.m. and 4 p.m., Monday through Friday. Reservations must be made 24 hours in advance of the requested trip.

COLTS also has a **Rural Transportation Program** for a reduced rate for Persons with Disabilities, or PwD. The PwD Program is available for qualifying individuals between the hours of 6 a.m. and 6 p.m., subject to geographical restrictions.

To make an appointment, please call (570) 963-6795.

February

**Indicates Fixed Route in Service

SUNDAY	MONDAY	TUESDAY	WEDNESDAY	THURSDAY	FRIDAY	SATURDAY																																																																																											
<p>JANUARY</p> <table border="1"> <tr><th>S</th><th>M</th><th>T</th><th>W</th><th>T</th><th>F</th><th>S</th></tr> <tr><td></td><td>1</td><td>2</td><td>3</td><td>4</td><td>5</td><td>6</td></tr> <tr><td>7</td><td>8</td><td>9</td><td>10</td><td>11</td><td>12</td><td>13</td></tr> <tr><td>14</td><td>15</td><td>16</td><td>17</td><td>18</td><td>19</td><td>20</td></tr> <tr><td>21</td><td>22</td><td>23</td><td>24</td><td>25</td><td>26</td><td>27</td></tr> <tr><td>28</td><td>29</td><td>30</td><td>31</td><td></td><td></td><td></td></tr> </table>	S	M	T	W	T	F	S		1	2	3	4	5	6	7	8	9	10	11	12	13	14	15	16	17	18	19	20	21	22	23	24	25	26	27	28	29	30	31				<p>MARCH</p> <table border="1"> <tr><th>S</th><th>M</th><th>T</th><th>W</th><th>T</th><th>F</th><th>S</th></tr> <tr><td></td><td></td><td></td><td></td><td></td><td></td><td>1 2</td></tr> <tr><td>3</td><td>4</td><td>5</td><td>6</td><td>7</td><td>8</td><td>9</td></tr> <tr><td>10</td><td>11</td><td>12</td><td>13</td><td>14</td><td>15</td><td>16</td></tr> <tr><td>17</td><td>18</td><td>19</td><td>20</td><td>21</td><td>22</td><td>23</td></tr> <tr><td>24</td><td>25</td><td>26</td><td>27</td><td>28</td><td>29</td><td>30</td></tr> <tr><td>31</td><td></td><td></td><td></td><td></td><td></td><td></td></tr> </table>	S	M	T	W	T	F	S							1 2	3	4	5	6	7	8	9	10	11	12	13	14	15	16	17	18	19	20	21	22	23	24	25	26	27	28	29	30	31									1	2	3
S	M	T	W	T	F	S																																																																																											
	1	2	3	4	5	6																																																																																											
7	8	9	10	11	12	13																																																																																											
14	15	16	17	18	19	20																																																																																											
21	22	23	24	25	26	27																																																																																											
28	29	30	31																																																																																														
S	M	T	W	T	F	S																																																																																											
						1 2																																																																																											
3	4	5	6	7	8	9																																																																																											
10	11	12	13	14	15	16																																																																																											
17	18	19	20	21	22	23																																																																																											
24	25	26	27	28	29	30																																																																																											
31																																																																																																	
4	5	6	7	8	GROUNDHOG DAY	10																																																																																											
11	12 LINCOLN'S BIRTHDAY	13	14 ST. VALENTINE'S DAY ASH WEDNESDAY	15	16	17																																																																																											
18	19 ADMIN. OFFICE CLOSED WASHINGTON'S BIRTHDAY PRESIDENTS' DAY	20	21	22	23	24																																																																																											
25	26	27	28	29																																																																																													

COLTS Shared Ride Service Hours

LOTTERY / PWD / MATP

Please, schedule appointments at least two (2) days in advance.

There are designated pick-up times for each geographical location.

Times noted at the top of each column are the earliest/latest times to secure pick-up/drop off for an appointment.

SHOPPING TRIPS for larger groups may be requested between 11 :00 A.M. -1 :00 P.M.

9:00 a.m. – 2:00 p.m.

APPOINTMENT TIMES	LAST PICK UP 3:00
Blakely	Clarks Summit
Peckville	Clarks Green
Dickson City	Chinchilla
Dunmore	Moosic
Throop	Old Forge
Olyphant	Taylor
Scranton	

10:00 a.m. – 2:00 p.m.

APPOINTMENT TIMES	LAST PICK UP 3:00
Glenburn	Waverly
Abington	Eynon
So. Abington Twp	Jessup
No. Abington Twp	Mayfield
La Plume	Jermyn
Scott Twp.	Archbald
Dalton	Factoryville
Ransom	Waverly Twp

10:30 a.m. – 1:00 p.m.

APPOINTMENT TIMES	LAST PICK UP 2:00
Carbondale	Elmhurst
Childs	Moscow
Greenfield	Jefferson Twp.
Simpson	Fell Township
Fleetville	Mount Cobb
Spring Brook Twp	

11:00 a.m. – 1:00 p.m.

APPOINTMENT TIMES	LAST PICK UP 2:00
Big Bass Lake	Eagle Lake
Browndale	Thornhurst
Clifton	Roaring Brook Twp
Covington Twp	Vandling
Greenfield Twp	



County of Lackawanna Transit System
(570) 346-2061 www.coltsbus.com

March

**Indicates Fixed Route in Service

SUNDAY	MONDAY	TUESDAY	WEDNESDAY	THURSDAY	FRIDAY	SATURDAY
FEBRUARY S M T W T F S 1 2 3 4 5 6 7 8 9 10 11 12 13 14 15 16 17 18 19 20 21 22 23 24 25 26 27 28 29	APRIL S M T W T F S 1 2 3 4 5 6 7 8 9 10 11 12 13 14 15 16 17 18 19 20 21 22 23 24 25 26 27 28 29 30				1 EMPLOYEE APPRECIATION DAY	2
3	4	5	6	7	8	9
10 DAYLIGHT SAVING TIME BEGINS	11	12	13	14	15	16
17 ST. PATRICK'S DAY	18	19 FIRST DAY OF SPRING	20	21	22	23 PURIM
24 PALM SUNDAY EASTER 31	25	26	27	28	29 ADMIN. OFFICE CLOSED GOOD FRIDAY	30

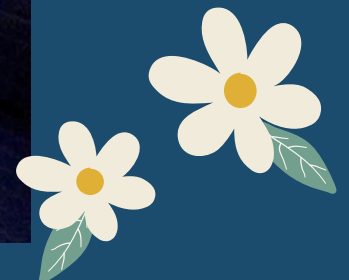
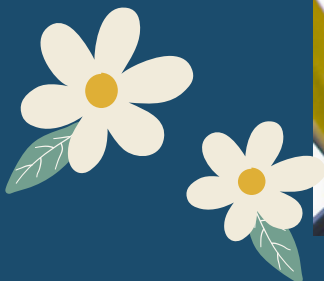


Medical Assistance Transportation Program

Funded by the Pennsylvania Department of Public Welfare, the Medical Assistance Transportation Program (MATP) is a transportation service available to Medical Assistance consumers in Lackawanna County.

Upon approval, MATP can provide transportation or mileage reimbursement to medical care appointments or services from a Medical Assistance Provider.

For an application or questions about MATP, **please call (570) 963-6482**



April

**Indicates Fixed Route in Service

SUNDAY	MONDAY	TUESDAY	WEDNESDAY	THURSDAY	FRIDAY	SATURDAY																																																																																																														
	1 APRIL FOOLS DAY	2	3	4	5	6																																																																																																														
7	8	9	10	11	12	13																																																																																																														
14	15	16	17	18	19	20																																																																																																														
21	22 PASSOVER BEGINS EARTH DAY	23	24 ADMINISTRATIVE PROFESSIONALS' DAY	25	26	27																																																																																																														
28	29	30 PASSOVER ENDS			<table border="1"> <thead> <tr> <th colspan="7">MARCH</th> <th colspan="7">MAY</th> </tr> <tr> <th>S</th><th>M</th><th>T</th><th>W</th><th>T</th><th>F</th><th>S</th> <th>S</th><th>M</th><th>T</th><th>W</th><th>T</th><th>F</th><th>S</th> </tr> </thead> <tbody> <tr> <td></td><td></td><td></td><td></td><td></td><td>1</td><td>2</td> <td></td><td></td><td></td><td>1</td><td>2</td><td>3</td><td>4</td> </tr> <tr> <td>3</td><td>4</td><td>5</td><td>6</td><td>7</td><td>8</td><td>9</td> <td>5</td><td>6</td><td>7</td><td>8</td><td>9</td><td>10</td><td>11</td> </tr> <tr> <td>10</td><td>11</td><td>12</td><td>13</td><td>14</td><td>15</td><td>16</td> <td>12</td><td>13</td><td>14</td><td>15</td><td>16</td><td>17</td><td>18</td> </tr> <tr> <td>17</td><td>18</td><td>19</td><td>20</td><td>21</td><td>22</td><td>23</td> <td>19</td><td>20</td><td>21</td><td>22</td><td>23</td><td>24</td><td>25</td> </tr> <tr> <td>24</td><td>25</td><td>26</td><td>27</td><td>28</td><td>29</td><td>30</td> <td>26</td><td>27</td><td>28</td><td>29</td><td>30</td><td>31</td> </tr> <tr> <td></td><td></td><td></td><td></td><td></td><td></td><td>31</td> <td></td><td></td><td></td><td></td><td></td><td></td> </tr> </tbody> </table>	MARCH							MAY							S	M	T	W	T	F	S	S	M	T	W	T	F	S						1	2				1	2	3	4	3	4	5	6	7	8	9	5	6	7	8	9	10	11	10	11	12	13	14	15	16	12	13	14	15	16	17	18	17	18	19	20	21	22	23	19	20	21	22	23	24	25	24	25	26	27	28	29	30	26	27	28	29	30	31							31							
MARCH							MAY																																																																																																													
S	M	T	W	T	F	S	S	M	T	W	T	F	S																																																																																																							
					1	2				1	2	3	4																																																																																																							
3	4	5	6	7	8	9	5	6	7	8	9	10	11																																																																																																							
10	11	12	13	14	15	16	12	13	14	15	16	17	18																																																																																																							
17	18	19	20	21	22	23	19	20	21	22	23	24	25																																																																																																							
24	25	26	27	28	29	30	26	27	28	29	30	31																																																																																																								
						31																																																																																																														

Evening City Circle Routes

The **Evening City Circle Routes** provide transit service Monday through Saturday between 7:00 p.m. and 1:00 a.m. There are two routes available: Evening City Circle North, which travels to the Viewmont Mall, and Evening City Circle South, which ends at the Shoppes at Montage and Moosic Cinemark Theater.

Beginning and ending at the Transit Center, both shuttle buses circle their routes **hourly**, Monday through Friday.



On **Saturdays**, the Evening City Circle North begins at 6:00 p.m. until 1:00am. Two shuttles rotate every hour from the Lackawanna Transit Center.

Regular fare is **\$1.75** on the Evening City Circle Routes.

For more information on the Evening City Circle Routes, please call **(570) 346-2061** from **8:30am until 4 p.m.**

After **4:00pm**, please call **(570) 347-8877.**

Happy Mother's Day!

May

**Indicates Fixed Route in Service

SUNDAY	MONDAY	TUESDAY	WEDNESDAY	THURSDAY	FRIDAY	SATURDAY																																																																																											
<p>APRIL</p> <table border="1"> <tr><th>S</th><th>M</th><th>T</th><th>W</th><th>T</th><th>F</th><th>S</th></tr> <tr><td></td><td>1</td><td>2</td><td>3</td><td>4</td><td>5</td><td>6</td></tr> <tr><td>7</td><td>8</td><td>9</td><td>10</td><td>11</td><td>12</td><td>13</td></tr> <tr><td>14</td><td>15</td><td>16</td><td>17</td><td>18</td><td>19</td><td>20</td></tr> <tr><td>21</td><td>22</td><td>23</td><td>24</td><td>25</td><td>26</td><td>27</td></tr> <tr><td>28</td><td>29</td><td>30</td><td></td><td></td><td></td><td></td></tr> </table>	S	M	T	W	T	F	S		1	2	3	4	5	6	7	8	9	10	11	12	13	14	15	16	17	18	19	20	21	22	23	24	25	26	27	28	29	30					<p>JUNE</p> <table border="1"> <tr><th>S</th><th>M</th><th>T</th><th>W</th><th>T</th><th>F</th><th>S</th></tr> <tr><td></td><td></td><td></td><td></td><td></td><td></td><td>1</td></tr> <tr><td>2</td><td>3</td><td>4</td><td>5</td><td>6</td><td>7</td><td>8</td></tr> <tr><td>9</td><td>10</td><td>11</td><td>12</td><td>13</td><td>14</td><td>15</td></tr> <tr><td>16</td><td>17</td><td>18</td><td>19</td><td>20</td><td>21</td><td>22</td></tr> <tr><td>23</td><td>24</td><td>25</td><td>26</td><td>27</td><td>28</td><td>29</td></tr> <tr><td>30</td><td></td><td></td><td></td><td></td><td></td><td></td></tr> </table>	S	M	T	W	T	F	S							1	2	3	4	5	6	7	8	9	10	11	12	13	14	15	16	17	18	19	20	21	22	23	24	25	26	27	28	29	30								1	2	3	4
S	M	T	W	T	F	S																																																																																											
	1	2	3	4	5	6																																																																																											
7	8	9	10	11	12	13																																																																																											
14	15	16	17	18	19	20																																																																																											
21	22	23	24	25	26	27																																																																																											
28	29	30																																																																																															
S	M	T	W	T	F	S																																																																																											
						1																																																																																											
2	3	4	5	6	7	8																																																																																											
9	10	11	12	13	14	15																																																																																											
16	17	18	19	20	21	22																																																																																											
23	24	25	26	27	28	29																																																																																											
30																																																																																																	
5 CINCO DE MAYO	6	7	8	9	10	11																																																																																											
12 MOTHER'S DAY	13	14 PRIMARY ELECTION DAY	15	16	17	18 ARMED FORCES DAY																																																																																											
19	20	21	22	23	24	25																																																																																											
26	27 NO SERVICE MEMORIAL DAY	28	29	30	31																																																																																												

On Board Policies

- For your safety, seatbelts are required to be worn by all Shared Ride passengers. Medical exemptions are available upon request.
- Open food or beverage containers, smoking, and use of loud electronic devices are strictly prohibited on COLTS' vehicles.
- Packages should be stored under the seat in front of you.
- Passengers are limited to **three shopping bags with a 15 pound limit** on board. COLTS' Operators will gladly assist when feasible and reasonable.
- Passengers may request a Reasonable Accommodation in accordance with the Americans with Disabilities Act by contacting Keri Savage at 570-346-2061, ext 1263.
- Be courteous to others as you travel, and don't forget to thank your operator!



Happy Father's Day!

June

**Indicates Fixed Route in Service

SUNDAY	MONDAY	TUESDAY	WEDNESDAY	THURSDAY	FRIDAY	SATURDAY																																																																																																		
<table border="1"> <tr><td colspan="7">MAY</td></tr> <tr><td>S</td><td>M</td><td>T</td><td>W</td><td>T</td><td>F</td><td>S</td></tr> <tr><td></td><td></td><td></td><td>1</td><td>2</td><td>3</td><td>4</td></tr> <tr><td>5</td><td>6</td><td>7</td><td>8</td><td>9</td><td>10</td><td>11</td></tr> <tr><td>12</td><td>13</td><td>14</td><td>15</td><td>16</td><td>17</td><td>18</td></tr> <tr><td>19</td><td>20</td><td>21</td><td>22</td><td>23</td><td>24</td><td>25</td></tr> <tr><td>26</td><td>27</td><td>28</td><td>29</td><td>30</td><td>31</td><td></td></tr> </table>	MAY							S	M	T	W	T	F	S				1	2	3	4	5	6	7	8	9	10	11	12	13	14	15	16	17	18	19	20	21	22	23	24	25	26	27	28	29	30	31		<table border="1"> <tr><td colspan="7">JULY</td></tr> <tr><td>S</td><td>M</td><td>T</td><td>W</td><td>T</td><td>F</td><td>S</td></tr> <tr><td></td><td>1</td><td>2</td><td>3</td><td>4</td><td>5</td><td>6</td></tr> <tr><td>7</td><td>8</td><td>9</td><td>10</td><td>11</td><td>12</td><td>13</td></tr> <tr><td>14</td><td>15</td><td>16</td><td>17</td><td>18</td><td>19</td><td>20</td></tr> <tr><td>21</td><td>22</td><td>23</td><td>24</td><td>25</td><td>26</td><td>27</td></tr> <tr><td>28</td><td>29</td><td>30</td><td>31</td><td></td><td></td><td></td></tr> </table>	JULY							S	M	T	W	T	F	S		1	2	3	4	5	6	7	8	9	10	11	12	13	14	15	16	17	18	19	20	21	22	23	24	25	26	27	28	29	30	31								1
MAY																																																																																																								
S	M	T	W	T	F	S																																																																																																		
			1	2	3	4																																																																																																		
5	6	7	8	9	10	11																																																																																																		
12	13	14	15	16	17	18																																																																																																		
19	20	21	22	23	24	25																																																																																																		
26	27	28	29	30	31																																																																																																			
JULY																																																																																																								
S	M	T	W	T	F	S																																																																																																		
	1	2	3	4	5	6																																																																																																		
7	8	9	10	11	12	13																																																																																																		
14	15	16	17	18	19	20																																																																																																		
21	22	23	24	25	26	27																																																																																																		
28	29	30	31																																																																																																					
2	3	4	5	6	7	8																																																																																																		
9	10	11	12	13	14	15																																																																																																		
					FLAG DAY																																																																																																			
16	17	18	19	20	21	22																																																																																																		
FATHER'S DAY			JUNETEENTH HOLIDAY	FIRST DAY OF SUMMER																																																																																																				
23	24	25	26	27	28	29																																																																																																		
30																																																																																																								



Citizens' Advisory Committee

We are continually trying to improve our service to you, and your opinion matters!

COLTS is always looking for new members to join our

Citizens Advisory Committee.

The CAC generally meets every two to three months to gather input and feedback from our riders and stakeholders.

If you are interested in becoming a member, please contact **Keri Savage at 570-346-2061, ext.1263**

July

**Indicates Fixed Route in Service

SUNDAY	MONDAY	TUESDAY	WEDNESDAY	THURSDAY	FRIDAY	SATURDAY																																																																																																																	
	1	2	3	4 NO SERVICE INDEPENDENCE DAY	5	6																																																																																																																	
7	8	9	10	11	12	13																																																																																																																	
14	15	16	17	18	19	20																																																																																																																	
21	22	23	24	25	26	27																																																																																																																	
28	29	30	31	<table border="1"> <thead> <tr> <th colspan="7">JUNE</th> <th colspan="7">AUGUST</th> </tr> <tr> <th>S</th><th>M</th><th>T</th><th>W</th><th>T</th><th>F</th><th>S</th> <th>S</th><th>M</th><th>T</th><th>W</th><th>T</th><th>F</th><th>S</th> </tr> </thead> <tbody> <tr> <td></td><td></td><td></td><td></td><td></td><td></td><td>1</td> <td></td><td></td><td></td><td></td><td></td><td>1</td><td>2</td><td>3</td> </tr> <tr> <td>2</td><td>3</td><td>4</td><td>5</td><td>6</td><td>7</td><td>8</td> <td>4</td><td>5</td><td>6</td><td>7</td><td>8</td><td>9</td><td>10</td> </tr> <tr> <td>9</td><td>10</td><td>11</td><td>12</td><td>13</td><td>14</td><td>15</td> <td>11</td><td>12</td><td>13</td><td>14</td><td>15</td><td>16</td><td>17</td> </tr> <tr> <td>16</td><td>17</td><td>18</td><td>19</td><td>20</td><td>21</td><td>22</td> <td>18</td><td>19</td><td>20</td><td>21</td><td>22</td><td>23</td><td>24</td> </tr> <tr> <td>23</td><td>24</td><td>25</td><td>26</td><td>27</td><td>28</td><td>29</td> <td>25</td><td>26</td><td>27</td><td>28</td><td>29</td><td>30</td><td>31</td> </tr> <tr> <td></td><td></td><td></td><td></td><td></td><td></td><td>30</td> <td></td><td></td><td></td><td></td><td></td><td></td><td></td> </tr> </tbody> </table>		JUNE							AUGUST							S	M	T	W	T	F	S	S	M	T	W	T	F	S							1						1	2	3	2	3	4	5	6	7	8	4	5	6	7	8	9	10	9	10	11	12	13	14	15	11	12	13	14	15	16	17	16	17	18	19	20	21	22	18	19	20	21	22	23	24	23	24	25	26	27	28	29	25	26	27	28	29	30	31							30								
JUNE							AUGUST																																																																																																																
S	M	T	W	T	F	S	S	M	T	W	T	F	S																																																																																																										
						1						1	2	3																																																																																																									
2	3	4	5	6	7	8	4	5	6	7	8	9	10																																																																																																										
9	10	11	12	13	14	15	11	12	13	14	15	16	17																																																																																																										
16	17	18	19	20	21	22	18	19	20	21	22	23	24																																																																																																										
23	24	25	26	27	28	29	25	26	27	28	29	30	31																																																																																																										
						30																																																																																																																	

Pennsylvania Lottery Program

Seniors, 65 years of age and older, who qualify for the PA Shared Ride Lottery Program may use COLTS' Shared Ride at no charge.

Reservations must be submitted two days in advance and are subject to our posted Hours of Service.

We encourage Activity Centers and apartment communities to make group trips for shopping and outings.



Our Administrative Office is open 8:30 a.m. to 4:00 p.m. Monday through Friday

Please, call our intake coordinator at (570) 963-6795 for any questions or comments.

August

***Indicates Fixed Route in Service*

SUNDAY	MONDAY	TUESDAY	WEDNESDAY	THURSDAY	FRIDAY	SATURDAY																																																																																				
<p>JULY</p> <table border="1"> <tr><td>S</td><td>M</td><td>T</td><td>W</td><td>T</td><td>F</td><td>S</td></tr> <tr><td></td><td>1</td><td>2</td><td>3</td><td>4</td><td>5</td><td>6</td></tr> <tr><td>7</td><td>8</td><td>9</td><td>10</td><td>11</td><td>12</td><td>13</td></tr> <tr><td>14</td><td>15</td><td>16</td><td>17</td><td>18</td><td>19</td><td>20</td></tr> <tr><td>21</td><td>22</td><td>23</td><td>24</td><td>25</td><td>26</td><td>27</td></tr> <tr><td>28</td><td>29</td><td>30</td><td>31</td><td></td><td></td><td></td></tr> </table>	S	M	T	W	T	F	S		1	2	3	4	5	6	7	8	9	10	11	12	13	14	15	16	17	18	19	20	21	22	23	24	25	26	27	28	29	30	31				<p>SEPTEMBER</p> <table border="1"> <tr><td>S</td><td>M</td><td>T</td><td>W</td><td>T</td><td>F</td><td>S</td></tr> <tr><td></td><td>1</td><td>2</td><td>3</td><td>4</td><td>5</td><td>6</td></tr> <tr><td>7</td><td>8</td><td>9</td><td>10</td><td>11</td><td>12</td><td>13</td></tr> <tr><td>14</td><td>15</td><td>16</td><td>17</td><td>18</td><td>19</td><td>20</td></tr> <tr><td>21</td><td>22</td><td>23</td><td>24</td><td>25</td><td>26</td><td>27</td></tr> <tr><td>28</td><td>29</td><td>30</td><td></td><td></td><td></td><td></td></tr> </table>	S	M	T	W	T	F	S		1	2	3	4	5	6	7	8	9	10	11	12	13	14	15	16	17	18	19	20	21	22	23	24	25	26	27	28	29	30							1	2	3
S	M	T	W	T	F	S																																																																																				
	1	2	3	4	5	6																																																																																				
7	8	9	10	11	12	13																																																																																				
14	15	16	17	18	19	20																																																																																				
21	22	23	24	25	26	27																																																																																				
28	29	30	31																																																																																							
S	M	T	W	T	F	S																																																																																				
	1	2	3	4	5	6																																																																																				
7	8	9	10	11	12	13																																																																																				
14	15	16	17	18	19	20																																																																																				
21	22	23	24	25	26	27																																																																																				
28	29	30																																																																																								
4	5	6	7	8	9	10																																																																																				
11	12	13	14	15	16	17																																																																																				
18	19	20	21	22	23	24																																																																																				
25	26	27	28	29	30	31																																																																																				

Lost and Found Policy

If you left something behind on any COLTS vehicle, please call (570) 346-2061. When the driver has returned, you will be able to pick up your item at COLTS headquarters located at 800 North South Road, Scranton PA 18504.

Unclaimed clothing and other miscellaneous items stored at COLTS headquarters for more than one month will be donated to charity.

Cell phones left for more than one month will be recycled.



September

**Indicates Fixed Route in Service

SUNDAY	MONDAY	TUESDAY	WEDNESDAY	THURSDAY	FRIDAY	SATURDAY																																																																																																	
1	2 NO SERVICE LABOR DAY	3	4	5	6	7																																																																																																	
8	9	10	11 PATRIOT DAY	12	13	14																																																																																																	
15	16	17	18	19	20	21																																																																																																	
22 FIRST DAY OF AUTUMN	23	24	25	26	27	28																																																																																																	
29	30				<table border="1"> <thead> <tr> <th colspan="7">AUGUST</th> <th colspan="7">OCTOBER</th> </tr> <tr> <th>S</th><th>M</th><th>T</th><th>W</th><th>T</th><th>F</th><th>S</th> <th>S</th><th>M</th><th>T</th><th>W</th><th>T</th><th>F</th><th>S</th> </tr> </thead> <tbody> <tr> <td></td><td></td><td></td><td></td><td>1</td><td>2</td><td>3</td> <td></td><td></td><td>1</td><td>2</td><td>3</td><td>4</td><td>5</td> </tr> <tr> <td>4</td><td>5</td><td>6</td><td>7</td><td>8</td><td>9</td><td>10</td> <td>6</td><td>7</td><td>8</td><td>9</td><td>10</td><td>11</td><td>12</td> </tr> <tr> <td>11</td><td>12</td><td>13</td><td>14</td><td>15</td><td>16</td><td>17</td> <td>13</td><td>14</td><td>15</td><td>16</td><td>17</td><td>18</td><td>19</td> </tr> <tr> <td>18</td><td>19</td><td>20</td><td>21</td><td>22</td><td>23</td><td>24</td> <td>20</td><td>21</td><td>22</td><td>23</td><td>24</td><td>25</td><td>26</td> </tr> <tr> <td>25</td><td>26</td><td>27</td><td>28</td><td>29</td><td>30</td><td>31</td> <td>27</td><td>28</td><td>29</td><td>30</td><td>31</td><td></td><td></td> </tr> </tbody> </table>	AUGUST							OCTOBER							S	M	T	W	T	F	S	S	M	T	W	T	F	S					1	2	3			1	2	3	4	5	4	5	6	7	8	9	10	6	7	8	9	10	11	12	11	12	13	14	15	16	17	13	14	15	16	17	18	19	18	19	20	21	22	23	24	20	21	22	23	24	25	26	25	26	27	28	29	30	31	27	28	29	30	31		
AUGUST							OCTOBER																																																																																																
S	M	T	W	T	F	S	S	M	T	W	T	F	S																																																																																										
				1	2	3			1	2	3	4	5																																																																																										
4	5	6	7	8	9	10	6	7	8	9	10	11	12																																																																																										
11	12	13	14	15	16	17	13	14	15	16	17	18	19																																																																																										
18	19	20	21	22	23	24	20	21	22	23	24	25	26																																																																																										
25	26	27	28	29	30	31	27	28	29	30	31																																																																																												

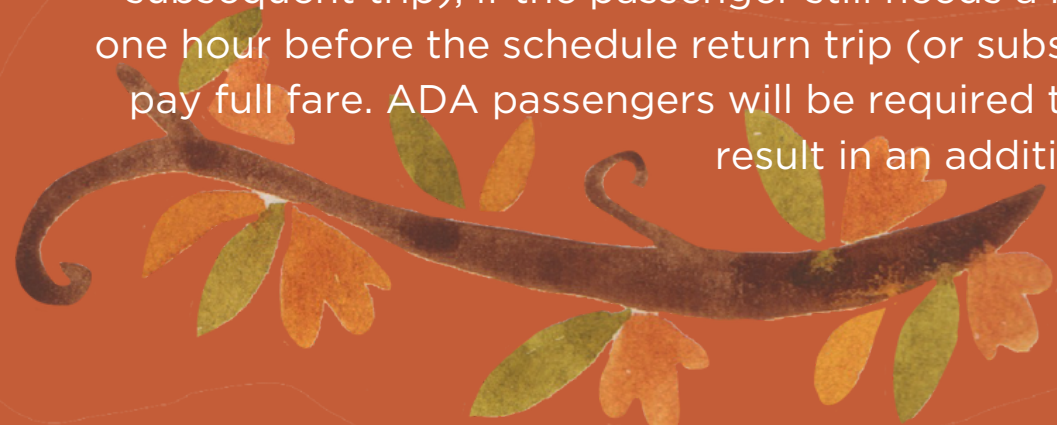
NO SHOW POLICY



To encourage responsible trip planning and use, COLTS enacted the Shared Ride No Show Policy in October 2020.

When you schedule a trip with COLTS, we reserve a 30-minute scheduled block of time for you, which is the window of time the vehicle may arrive. For example, your pickup time may be 9:15 a.m., which means your pickup window is 9:00 a.m. to 9:30 a.m. The scheduled pickup time may be different from the original time you requested; please ensure you record the actual booked window.

Except for ADA Complementary Paratransit riders, all passengers who “no show” a trip will be automatically cancelled for all other scheduled trips for the day. It is the responsibility of the passenger to call at least one (1) hour ahead in advance of the scheduled return trip (or subsequent trip), if the passenger still needs a ride. If the passenger contact COLTS less than one hour before the schedule return trip (or subsequent trip), the passenger may be required to pay full fare. ADA passengers will be required to call in to cancel all trips; failure to do so will result in an additional “No Show.”



October

**Indicates Fixed Route in Service

SUNDAY	MONDAY	TUESDAY	WEDNESDAY	THURSDAY	FRIDAY	SATURDAY																																																																																																											
		1	2 ROSH HASHANAH	3	4	5																																																																																																											
6	7	8	9	10	11	12 YOM KIPPUR																																																																																																											
13	14 ADMIN. OFFICE CLOSED INDIGENOUS PEOPLE'S DAY COLUMBUS DAY	15	16 BOSS' DAY	17	18	19																																																																																																											
20	21	22	23	24	25	26																																																																																																											
27	28	29	30	31 HALLOWEEN	<table border="1"> <thead> <tr> <th colspan="7">SEPTEMBER</th> <th colspan="7">NOVEMBER</th> </tr> <tr> <th>S</th><th>M</th><th>T</th><th>W</th><th>T</th><th>F</th><th>S</th> <th>S</th><th>M</th><th>T</th><th>W</th><th>T</th><th>F</th><th>S</th> </tr> </thead> <tbody> <tr> <td></td><td>1</td><td>2</td><td>3</td><td>4</td><td>5</td><td>6</td><td>7</td> <td></td><td></td><td></td><td></td><td></td><td>1</td><td>2</td> </tr> <tr> <td></td><td>8</td><td>9</td><td>10</td><td>11</td><td>12</td><td>13</td><td>14</td> <td></td><td>3</td><td>4</td><td>5</td><td>6</td><td>7</td><td>8</td><td>9</td> </tr> <tr> <td></td><td>15</td><td>16</td><td>17</td><td>18</td><td>19</td><td>20</td><td>21</td> <td></td><td>10</td><td>11</td><td>12</td><td>13</td><td>14</td><td>15</td><td>16</td> </tr> <tr> <td></td><td>22</td><td>23</td><td>24</td><td>25</td><td>26</td><td>27</td><td>28</td> <td></td><td>17</td><td>18</td><td>19</td><td>20</td><td>21</td><td>22</td><td>23</td> </tr> <tr> <td></td><td>29</td><td>30</td><td></td><td></td><td></td><td></td><td></td> <td></td><td>24</td><td>25</td><td>26</td><td>27</td><td>28</td><td>29</td><td>30</td> </tr> </tbody> </table>		SEPTEMBER							NOVEMBER							S	M	T	W	T	F	S	S	M	T	W	T	F	S		1	2	3	4	5	6	7						1	2		8	9	10	11	12	13	14		3	4	5	6	7	8	9		15	16	17	18	19	20	21		10	11	12	13	14	15	16		22	23	24	25	26	27	28		17	18	19	20	21	22	23		29	30							24	25	26	27	28	29	30
SEPTEMBER							NOVEMBER																																																																																																										
S	M	T	W	T	F	S	S	M	T	W	T	F	S																																																																																																				
	1	2	3	4	5	6	7						1	2																																																																																																			
	8	9	10	11	12	13	14		3	4	5	6	7	8	9																																																																																																		
	15	16	17	18	19	20	21		10	11	12	13	14	15	16																																																																																																		
	22	23	24	25	26	27	28		17	18	19	20	21	22	23																																																																																																		
	29	30							24	25	26	27	28	29	30																																																																																																		



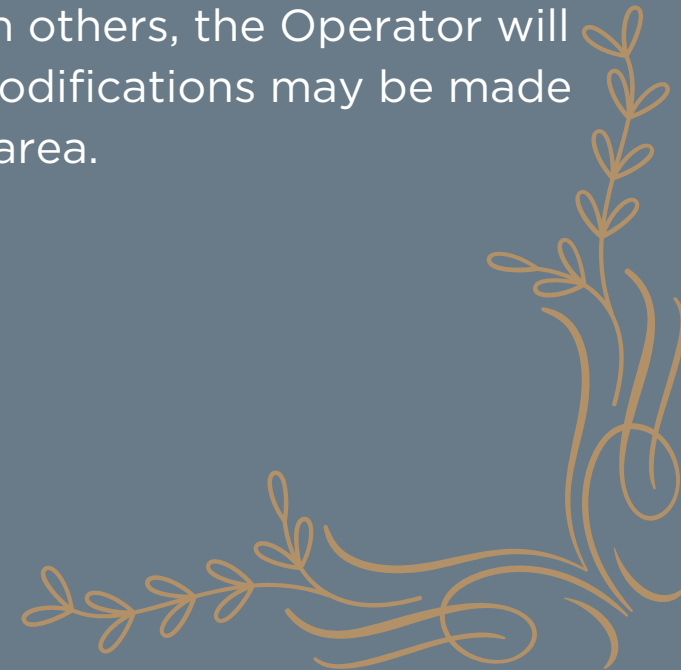
Inclement Weather Policy

In instances of inclement weather, COLTS Management, along with the Department of Safety and Security, will assess weather conditions before canceling all non-essential trips. Medical, dialysis, and work-related trips are high priority and will be provided, if feasible.

If weather conditions change during the course of operation, COLTS will evaluate, and may cancel any remaining non-essential trips, but will continue routes to return all clients that have completed the first leg of their trip.

If conditions in a specific area deteriorate quicker than others, the Operator will inform Administration of any unsafe conditions and modifications may be made regarding transportation in that area.

Happy
Thanksgiving



November

**Indicates Fixed Route in Service

SUNDAY	MONDAY	TUESDAY	WEDNESDAY	THURSDAY	FRIDAY	SATURDAY																																																																																					
<p>OCTOBER</p> <table border="1"> <tr><td>S</td><td>M</td><td>T</td><td>W</td><td>T</td><td>F</td><td>S</td></tr> <tr><td></td><td>1</td><td>2</td><td>3</td><td>4</td><td>5</td><td></td></tr> <tr><td>6</td><td>7</td><td>8</td><td>9</td><td>10</td><td>11</td><td>12</td></tr> <tr><td>13</td><td>14</td><td>15</td><td>16</td><td>17</td><td>18</td><td>19</td></tr> <tr><td>20</td><td>21</td><td>22</td><td>23</td><td>24</td><td>25</td><td>26</td></tr> <tr><td>27</td><td>28</td><td>29</td><td>30</td><td>31</td><td></td><td></td></tr> </table>	S	M	T	W	T	F	S		1	2	3	4	5		6	7	8	9	10	11	12	13	14	15	16	17	18	19	20	21	22	23	24	25	26	27	28	29	30	31			<p>DECEMBER</p> <table border="1"> <tr><td>S</td><td>M</td><td>T</td><td>W</td><td>T</td><td>F</td><td>S</td></tr> <tr><td></td><td>1</td><td>2</td><td>3</td><td>4</td><td>5</td><td>6</td><td>7</td></tr> <tr><td>8</td><td>9</td><td>10</td><td>11</td><td>12</td><td>13</td><td>14</td></tr> <tr><td>15</td><td>16</td><td>17</td><td>18</td><td>19</td><td>20</td><td>21</td></tr> <tr><td>22</td><td>23</td><td>24</td><td>25</td><td>26</td><td>27</td><td>28</td></tr> <tr><td>29</td><td>30</td><td>31</td><td></td><td></td><td></td><td></td></tr> </table>	S	M	T	W	T	F	S		1	2	3	4	5	6	7	8	9	10	11	12	13	14	15	16	17	18	19	20	21	22	23	24	25	26	27	28	29	30	31								1	2
S	M	T	W	T	F	S																																																																																					
	1	2	3	4	5																																																																																						
6	7	8	9	10	11	12																																																																																					
13	14	15	16	17	18	19																																																																																					
20	21	22	23	24	25	26																																																																																					
27	28	29	30	31																																																																																							
S	M	T	W	T	F	S																																																																																					
	1	2	3	4	5	6	7																																																																																				
8	9	10	11	12	13	14																																																																																					
15	16	17	18	19	20	21																																																																																					
22	23	24	25	26	27	28																																																																																					
29	30	31																																																																																									
<p>3</p> <p>DAYLIGHT SAVING TIME ENDS</p>	4	5	6	7	8	9																																																																																					
10	<p>11</p> <p>ADMIN. OFFICE CLOSED</p> <p>VETERANS DAY</p>	12	13	14	15	16																																																																																					
17	18	19	20	21	22	23																																																																																					
24	25	26	27	<p>28</p> <p>NO SERVICE</p> <p>THANKSGIVING DAY</p>	29	30																																																																																					



Happy Holidays

*from all of ours here at Colts
to all of yours, we wish you
and your loved ones a holiday season
filled with health, happiness
and good fortune.*

800 North South Road • Scranton, PA 18504 • (570) 346-2061

www.coltsbus.com

December

**Indicates Fixed Route in Service

SUNDAY	MONDAY	TUESDAY	WEDNESDAY	THURSDAY	FRIDAY	SATURDAY
1	2	3	4	5	6	7 PEARL HARBOR DAY
8	9	10	11	12	13	14
15	16	17	18	19	20	21 FIRST DAY OF WINTER
22	23	24 **SERVICE UNTIL 3PM CHRISTMAS EVE	25 NO SERVICE CHRISTMAS DAY HANUKKAH BEGINS	26	27	28
29	30	31 NEW YEAR'S EVE			NOVEMBER S M T W T F S 1 2 3 4 5 6 7 8 9 10 11 12 13 14 15 16 17 18 19 20 21 22 23 24 25 26 27 28 29 30	JANUARY 2025 S M T W T F S 1 2 3 4 5 6 7 8 9 10 11 12 13 14 15 16 17 18 19 20 21 22 23 24 25 26 27 28 29 30 31
				HANUKKAH ENDS JAN 2		

2025

JANUARY

S	M	T	W	T	F	S
			1	2	3	4
5	6	7	8	9	10	11
12	13	14	15	16	17	18
19	20	21	22	23	24	25
26	27	28	29	30	31	

FEBRUARY

S	M	T	W	T	F	S
						1
2	3	4	5	6	7	8
9	10	11	12	13	14	15
16	17	18	19	20	21	22
23	24	25	26	27	28	

MARCH

S	M	T	W	T	F	S
						1
2	3	4	5	6	7	8
9	10	11	12	13	14	15
16	17	18	19	20	21	22
23	24	25	26	27	28	29
30	31					

APRIL

S	M	T	W	T	F	S
		1	2	3	4	5
6	7	8	9	10	11	12
13	14	15	16	17	18	19
20	21	22	23	24	25	26
27	28	29	30			

MAY

S	M	T	W	T	F	S
			1	2	3	
4	5	6	7	8	9	10
11	12	13	14	15	16	17
18	19	20	21	22	23	24
25	26	27	28	29	30	31

JUNE

S	M	T	W	T	F	S
1	2	3	4	5	6	7
8	9	10	11	12	13	14
15	16	17	18	19	20	21
22	23	24	25	26	27	28
29	30					

JULY

S	M	T	W	T	F	S
		1	2	3	4	5
6	7	8	9	10	11	12
13	14	15	16	17	18	19
20	21	22	23	24	25	26
27	28	29	30	31		

AUGUST

S	M	T	W	T	F	S
						1 2
3	4	5	6	7	8	9
10	11	12	13	14	15	16
17	18	19	20	21	22	23
24	25	26	27	28	29	30
31						

SEPTEMBER

S	M	T	W	T	F	S
	1	2	3	4	5	6
7	8	9	10	11	12	13
14	15	16	17	18	19	20
21	22	23	24	25	26	27
28	29	30				

OCTOBER

S	M	T	W	T	F	S
			1	2	3	4
5	6	7	8	9	10	11
12	13	14	15	16	17	18
19	20	21	22	23	24	25
26	27	28	29	30	31	

NOVEMBER

S	M	T	W	T	F	S
						1
2	3	4	5	6	7	8
9	10	11	12	13	14	15
16	17	18	19	20	21	22
23	24	25	26	27	28	29
30						

DECEMBER

S	M	T	W	T	F	S
	1	2	3	4	5	6
7	8	9	10	11	12	13
14	15	16	17	18	19	20
21	22	23	24	25	26	27
28	29	30	31			



In Loving Memory of Karen McCool 🍀
1960-2023





TRANSLATION AND INFORMATION ON THIS CALENDAR

can be provided to you in a variety of accessible languages and formats including, but not limited to CD, Audio Tape, Braille, or large print.

If you need any translation or information in another language or format, please contact Keri Savage at KSavage@coltsbus.com

Si necesita información en otro idioma, por favor llame al 570-346-2061, extensión 1263

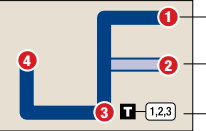
FIND MORE INFORMATION BY VISITING US AT: [HTTPS://COLTSBUS.COM](https://coltsbus.com)

 Facebook page: County of Lackawanna Transit System

 Find My Ride Schedule: <https://findmyridepa.org/#/>

Know Your Route and Map Settings

INSTRUCTIONS




- 1 **The bus stops at this location at listed times.** Look for the column of times below the matching symbol in the schedule.
- **Only certain trips operate along this portion of the route.** See the schedule for trips that provide service here.
- 1,2,3 **Transfer point.** Shows where bus intersects with other routes available for transfer.

The bus stops at the times listed below the numbered symbol. Light times are A.M.; **bold times are P.M.**

The timetable shows when the bus is scheduled to depart. Actual times may vary and depend upon traffic and weather conditions. Arrive at the bus stop 2-3 minutes early to avoid missing the bus.

1	2	3	4
10:00	—	10:40	11:00
11:00	11:15	11:40	12:00
12:00	—	12:40	1:00
1:00	1:15	1:40	2:00



ALL PASSENGERS MUST WEAR SEAT BELTS

LEGEND

- Route
- 1 Numbered Timepoint
- T Transfer Point
- 1,2,3 Connecting Routes
- P Parking Garage
- Point of Interest/Landmark
- H Hospital

TITLE VI POLICY - NOTICE TO THE PUBLIC

County of Lackawanna Transit System (COLTS) gives public notice that it complies with Title VI of the Civil Rights Act of 1964 and all related statutes. Title VI provides that “no person in the United States shall, on the ground of race, color, or national origin, be excluded from participation in, be denied the benefits of, or be subjected to discrimination under any program or activity receiving Federal financial assistance.” COLTS operates its programs and services without regard to race, color, and national origin in accordance with Title VI of the Civil Rights Act. Any person who believes she or he has been aggrieved by any unlawful discriminatory practice under Title VI may file a complaint with COLTS. For more information on COLTS’ Title VI Program, and the procedures to file a complaint, please:

- **Call 570-346-2061 extension 1263 • Email: ksavage@coltsbus.com**
- **Mail or visit our administrative office at
800 North South Road, Scranton, PA 18504**

Complaint procedures and forms are also available on COLTS’ website www.coltsbus.com.

A complainant may file a complaint directly with the Federal Transit Administration at the following address: Federal Transit Administration Office of Civil Rights Attention: Title VI Program Coordinator East Building, 5th Floor - TCR 1200 New Jersey Ave., SE Washington, DC 20590



County of Lackawanna Transit System

TITULO VI POLITICAS - AVISO AL PUBLICO

El Sistema de Tránsito del Condado de Lackawanna (COLTS) da aviso público de que cumple con el Título VI de la Ley de Derechos Civiles de 1964 y todos los estatutos relacionados. El Título VI dispone que “ninguna persona en los Estados Unidos, por motivos de raza, color u origen nacional, será excluida de la participación en, será negada los beneficios o será objeto de discriminación bajo cualquier programa o actividad que reciba financiamiento federal”. Asistencia “. COLTS opera sus programas y servicios sin consideración de raza, color y origen nacional de acuerdo con el Título VI de la Ley de Derechos Civiles. Cualquier persona que crea que ha sido agraviada por cualquier práctica discriminatoria ilegal bajo el Título VI puede presentar una queja ante COLTS. Para obtener más información sobre el Programa Título VI de COLTS y los procedimientos para presentar una queja, por favor:

- **Llame al 570-346-2061 extensión 1263 • Email: ksavage@coltsbus.com**
- **Por correo o visite nuestra oficina administrativa en:
800 North South Road, Scranton, PA 18504**

Los procedimientos de reclamación y los formularios también están disponibles en el sitio web de COLTS www.coltsbus.com. Un reclamante puede presentar una queja directamente con la Administración Federal de Tránsito en la siguiente Dirección: Oficina Federal de la Administración de Tránsito de los Derechos Civiles Atención: Coordinador del Programa del Título VI East Building, 5th Floor - TCR 1200 New Jersey Ave., SE Washington, DC 20590

If information is needed in another language, please call 570-346-2061 ext. 1263

Si se necesita información en otro idioma, por favor llame al 570-346-2061 ext. 1263

www.coltsbus.com

email: info@coltsbus.com (570) 346-2061



800 North South Road
Scranton, PA 18504
(570) 346-2061
www.coltsbus.com